



229 South Creek Road Wheeler Heights NSW

4 2 2

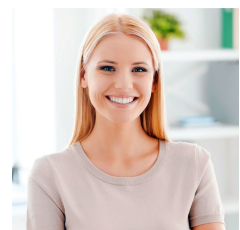
* For a private inspection or virtual tour of this property please contact the agent to arrange an appointment.

Bathed in sunshine with greenery all around, this welcoming home set on the high side of the street a family friendly neighbourhood overlooking Cromer Golf Course. A forward-thinking architect design reveals beautifully proportioned interiors, set under high ceilings with abundant use of glass to emphasise space and capture abundant natural light. The practical four-bedroom design incorporates a flexible teen retreat or in-law living quarters, plus private outdoor entertaining, level lawn and established gardens. Its positioned a short stroll to newly revamped village shops, picturesque walking trails

Type : House
Price : Offers Over \$1250 Per Week
View : <https://www.kinfinance.com.au/6683358>



Carole Frankston
02 8888 8888



Alicia Thomas
02 8888 8888

[For full version visit the website](https://www.kinfinance.com.au)